

vari.

 **hawke media**



Hawke Media Case Study:

A Workspace Designed For Growth

[▶ Watch Video](#)

To Visit Our
DFW Showroom
Call (800) 207-2587
or go to Vari.com

©2020 Varidesk, LLC

The Essentials

Hawke Media is One of the Fastest Growing Marketing Firms in Southern California.

To accommodate their hyper-growth, they created a new headquarters by renovating an old industrial warehouse and giving it an open, flexible design. The new office was designed to help support their recruitment/retention goals and serve as a showcase space where they could host clients and events.



“VariDesk® Had All the Different Types of Furniture That Complemented Exactly What We Were Trying to Do In the Environment We Wanted to Create.”

Erik H., Founder & CEO

Their Challenge

They Had Only Two Weeks to Furnish the New Space in a Way That Would Allow Them to Adapt for Future Growth.

The tight timeline was one key reason they chose Vari®, but they also trusted us to provide solutions that would help them maintain their collaborative culture and complement their industrial design aesthetic.



Our Solution

Hawke Trusted Vari to Help Them Go From Space Plan to Delivery and Full Installation in Just 3 Days.

Vari movable walls were used to divide and define spaces for workstations, casual meeting areas, and formal conference rooms, while our Privacy Booth created a secluded place for client calls. Flexibility was built into the design, allowing them to increase their density as they continued to grow.



“Working With a Company That Stands Behind What They’re Doing Was a Big Part of Why We Wanted to Go With VariDesk.”

Erik H., Founder & CEO

Just the Facts

Location:

California

Density:

151 sq ft per person

Office:

25,000 sq ft

Workstations:

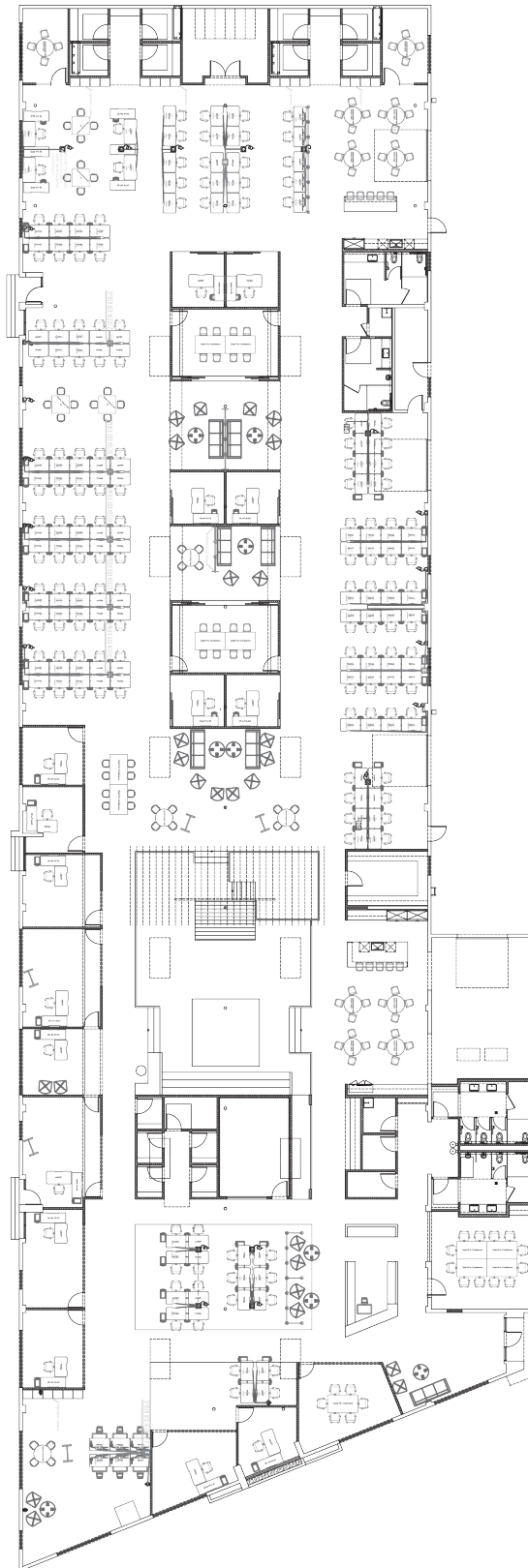
160

Time To Install:

3 Days

Cost:

\$15 sq ft

**Products Used:****Electric Desks**

- Electric Standing Desk 48x30
- Electric Standing Desk 60x30

Storage

- Slim File Cabinet
- Locker

Seating

- Active Seat
- Wood Conference Chair
- Wood Chair
- Wood Conference Stool
- Task Chair

Tables

- Standing Round Table
- Round Table
- Standing Conference Table
- Standing Meeting Table

Monitor Arms

- Dual-Monitor Arm
- Single-Monitor Arm
- Monitor Arm + Laptop Stand
- Dual-Monitor Arm 180 Degree

Standing Mats

- Standing Mat 34x20
- Standing Mat 36x24
- The ActiveMat®

Power & Lighting

- Power Hub
- LED Task Lamp + Wireless Charger

QuickFlex Walls™**Privacy Booth**